



GT0810B / GT0812B / GT0831B  
 GT1610B / GT1620B / GT1631B  
 GT2010B / GT2012B / GT2020B / GT2031B

## Grey Waste Tank with Integrated Intelligent Control

### INSTALLATION & USER INSTRUCTIONS

Thank you for purchasing this Whale® product.

For over 60 years Whale has led the way in the design and manufacture of freshwater, bilge and waste management systems including plumbing, taps, showers and pumps, for low voltage applications. The company and its products have built a reputation for quality, reliability and innovation backed up by excellent customer service.

For information on our full product range visit: [www.whalepumps.com](http://www.whalepumps.com)

### CONTENTS

1. Specification
2. Principles of Operation
3. To The Fitter
4. Application
5. Warnings
6. Parts List
7. Instructions for Installation
8. Maintenance
9. Troubleshooting
10. Winterizing
11. Service Support Details
12. EU Declaration of Conformity
13. Patents and Trademarks
14. Warranty

### FIGURES

- Fig. 1 Typical Installation
- Fig. 2 Grey Waste Tank Dimensions
- Fig. 3 Port Sizes & Recommended Drill Diameters For 8ltr (2.1 US gals) Grey Waste Tank Models
- Fig. 4 Port Sizes & Recommended Drill Diameters for 16ltr (4.2 US gals) and 20ltr (5.3 US gals) Grey Tank Models
- Fig. 5 Securing the Tank
- Fig. 6 Maximum Possible Angle of Installation
- Fig. 7 Securing Hose to Tank Port
- Fig. 8A & B Wiring Diagrams
- Fig. 9A Single Sensor Version
- Fig. 9B Double Sensor Version
- Fig. 10 Cleaning/Maintenance

### 1. SPECIFICATION

| Model                                     | Grey Waste Tanks  |         |                          |                                 |                          |                          |                       |         |                          |                          |
|---|---|---------|--------------------------|---------------------------------|--------------------------|--------------------------|-----------------------|---------|--------------------------|--------------------------|
| Product Codes                             | GT0810B   | GT0812B | GT0831B                  | GT1610B                         | GT1620B                  | GT1631B                  | GT2010B               | GT2012B | GT2020B                  | GT2031B                  |
| Capacity                                  | 8 Ltrs (2.1 US gals)  |         |                          | 16 Ltrs (4.2 US gals)           |                          |                          | 20 Ltrs (5.3 US gals) |         |                          |                          |
| No. of Sensors                            | 1   | 2       | 1                        | 1                               | 2                        | 1                        | 1                     | 2       | 2                        | 1                        |
| Voltage                                   | 12V d.c. / 24V d.c.   |         |                          |                                 |                          |                          |                       |         |                          |                          |
| Electrical Connections                    | Tinned wire ends  |         | 1 x Deutsch DT06-3S-P012 | Tinned wire ends                | 2 x Deutsch DT06-3S-P012 | 1 x Deutsch DT06-3S-P012 | Tinned wire ends      |         | 2 x Deutsch DT06-3S-P012 | 1 x Deutsch DT06-3S-P012 |
| Inlet Hose Connections                    | 19mm (¾") x 2<br>25mm (1") x 3<br>38mm (1½") x 3  |         |                          | 25mm (1") x 4<br>38mm (1½") x 4 |                          |                          |                       |         |                          |                          |
| Outlet Hose Connections                   | 19mm (¾") x 1<br>25mm (1") x 1  |         |                          | 25mm (1") x 2                   |                          |                          | 25mm (1") x 2         |         |                          |                          |
| Service Kit - Replacement Lid with Sensor | AK1005  | AK1008  | AK1006                   | AK1005                          | AK1007                   | AK1006                   | AK1005                | AK1008  | AK1007                   | AK1006                   |
| Materials                                 | Tank: MDPE<br>Seals: EPDM/Neoprene, Monprene®<br>Lid: Glass Filled Polypropylene, ABS, Polyurethane |         |                          |                                 |                          |                          |                       |         |                          |                          |

### 2. PRINCIPLES OF OPERATION

The Grey Waste Tank enables the user to manage all grey waste on board easily, through one skin fitting. The Intelligent Control sensor integrated into the tank lid provides automatic operation of the grey waste pump. The sensor will detect water in the grey waste tank at a pre-determined level, and will automatically activate the grey waste pump. When the tank is emptied, the switch will automatically turn the grey waste pump off. The 2 sensor models include a second sensor which can be used to control a second grey waste pump. It is factory set to activate at a higher water level and it will provide additional pumping capacity during periods of high inflow to the grey waste tank. Alternatively, the second sensor can be wired to a high level alarm, warning of a high water level within the grey waste tank.

#### Read the following carefully before installation

**WARNING:** Please note that incorrect installation may invalidate warranty.

### 3. TO THE FITTER

#### To the Fitter:

Check that the product is suitable for the intended application, follow these installation instructions and ensure all relevant personnel read the points listed below. Also ensure that these operating instructions are passed on to the end user. The manufacturer cannot be held responsible for claims arising from incorrect installation, unauthorised modification or misuse of the product.

#### To the User:

Read the following instructions carefully.

### 4. APPLICATION

The Grey Waste Tank is designed to collect grey shower waste water. If it is intended for use for any other purpose or with any other liquid, it is the user's responsibility to ensure that the tank and switch are suitable for the intended use and, in particular, that the materials are fully compatible with the liquids to be used. The integrated Intelligent Control sensor is designed to operate at 12V d.c or 24V d.c. only. The sensor is suitable for use with pumps operating with current up to 20A, and is recommended for use with Whale Gulper 220 or Gulper 320 grey waste pumps (see [www.whalepumps.com/marine](http://www.whalepumps.com/marine) for information).

### 5. WARNINGS

- With all applications, it is important that a system of safe working practice is applied to installation, use and maintenance. Ensure the electric supply is turned off and that the waste water system is drained before installation.
- The Grey Waste Tank is designed for the storage of grey waste water in recreational marine vessels. Your warranty may be invalidated if the product is used in other applications or outside the remit of the standards quoted on the packaging/product literature.



WARNING



**Step 1:** Drill only the ports which are to be used in the installation. Port sizes and recommended drill diameters are shown in Figure 3 for 8ltr (2.1 US Gals) tank models, and Figure 4 for 16ltr (4.2 US Gals) and 20ltr (5.3 US Gals) tank models. Ensure all swarf is removed from inside the tank after drilling.

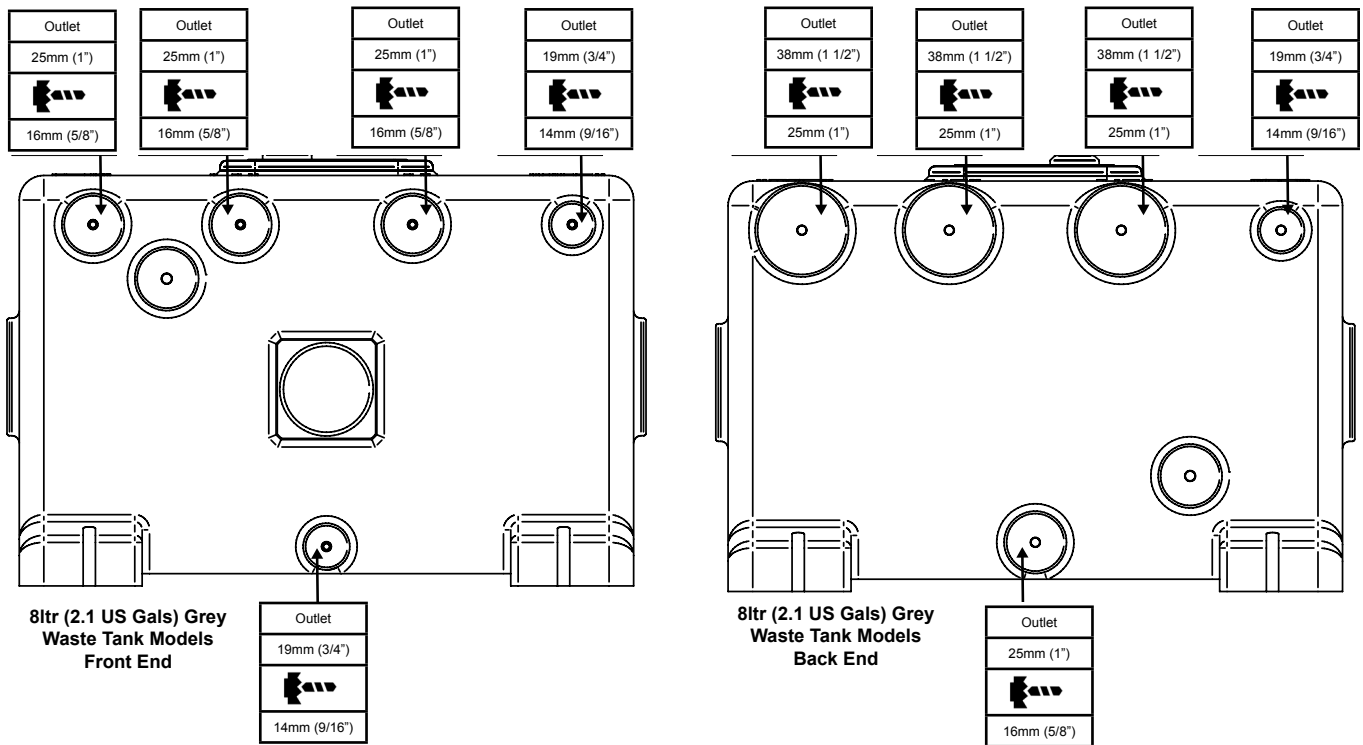


Figure 3 Port Sizes & Recommended Drill Diameters For 8ltr (2.1 US Gals) Grey Waste Tank Models

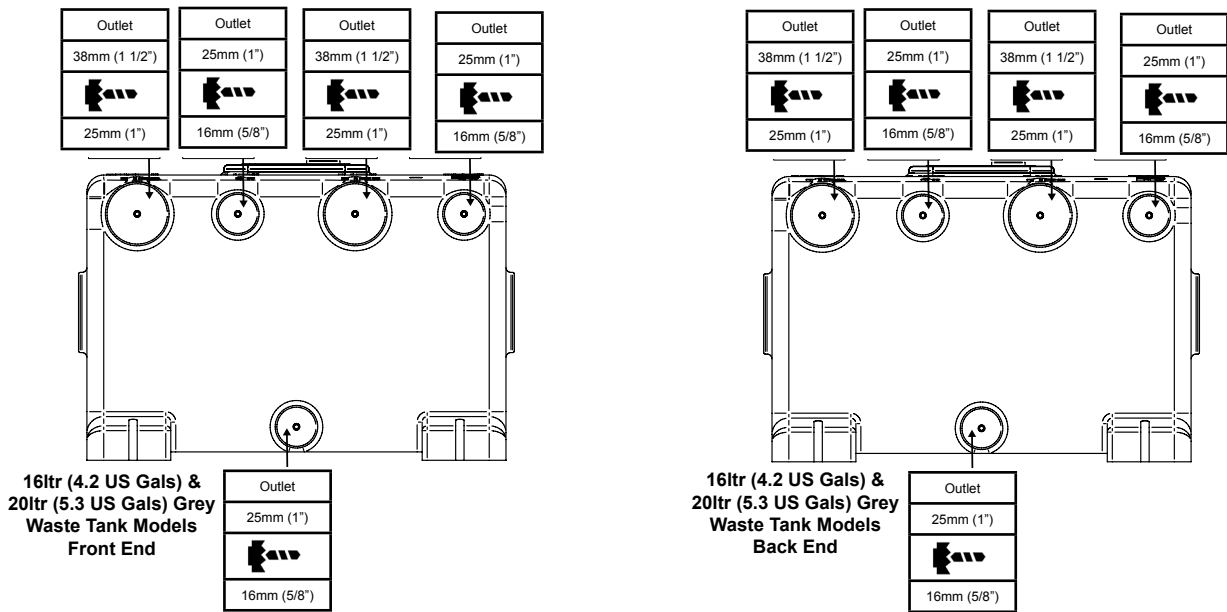


Figure 4 Port Sizes & Recommended Drill Diameters For 16ltr (4.2 US gals) And 20ltr (5.3 US gals) Tank Models

**Step 2:** The tank **must be** secured using 4 appropriate screws, through the feet of the tank as shown in Figure 5. **NOTE:** The angle of the tank **must not** exceed 10° (Figure 6). **NOTE: Do not screw directly to the hull – MUST** be mounted on a bulkhead or an additional board.

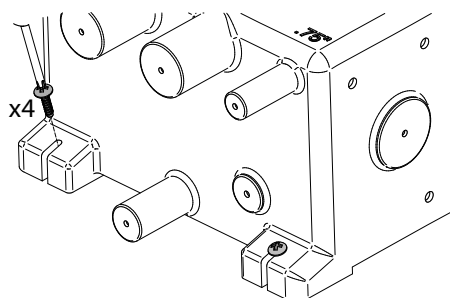


Figure 5 Securing The Tank

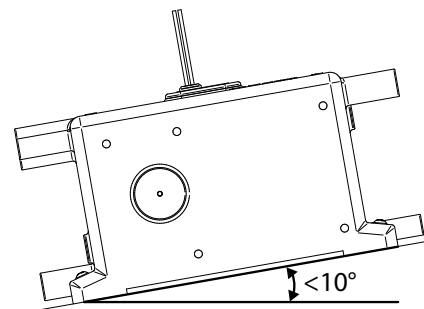


Figure 6 Maximum Possible Angle of Installation

**Step 3:** Secure all hosing onto the selected ports using appropriate hose clamps, as shown in Figure 7. Check no leaks occur. Do not overtighten hose clamps.

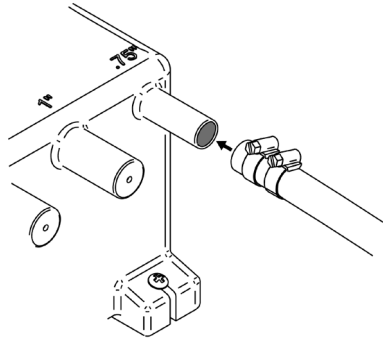


Figure 7 Securing Hose to Tank Port

**Step 4: Wiring:** See Figure 8A or figure 8B.

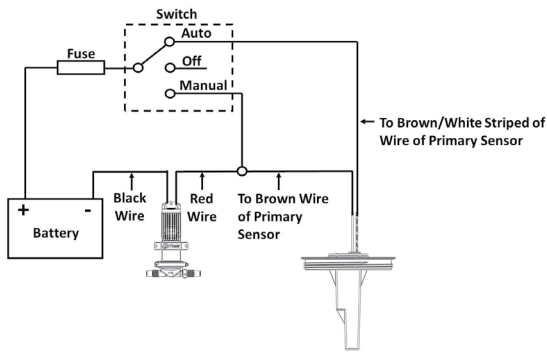


Figure 8A Wiring Diagram - for Single Sensor Models

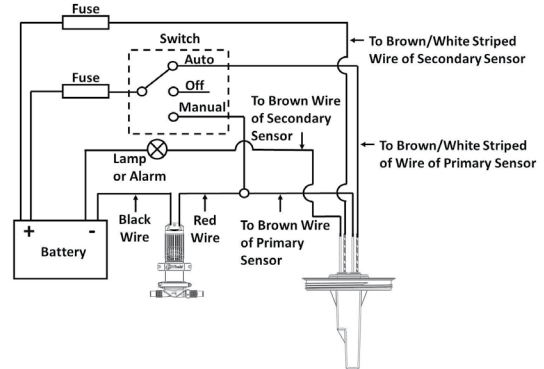


Figure 8B Wiring Diagram - for Double Sensor Models

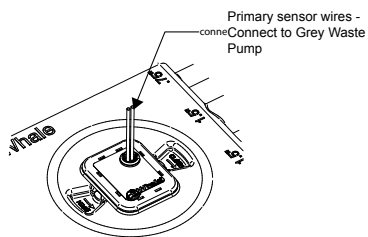


Figure 9A Single Sensor Models

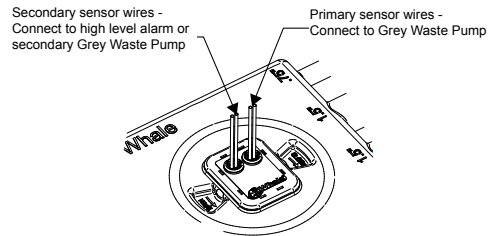


Figure 9B Double Sensor Models

**Step 5: Instructions for Use**

Once installed, turn on shower or tap to fill grey waste tank. Ensure the pump is operating and waste water is being removed from the tank. **Note:** If using a seacock, ensure it is open before use.

## 8. MAINTENANCE

For best performance, the sensor faces on the lid **must be** cleaned from debris/residue regularly, at least every 3 months. See Figure 10. Do not use an abrasive cleaner.

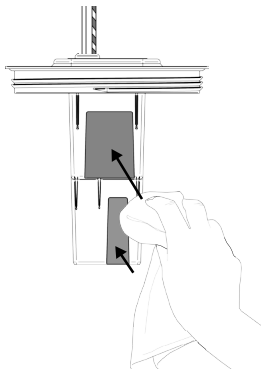


Figure 10 Cleaning/Maintenance



Munster Simms Engineering Ltd.  
2 Enterprise Road, Bangor, Co. Down, N. Ireland BT19 7TA  
Tel: +44 (0)28 9127 0531 Email: [info@whalepumps.com](mailto:info@whalepumps.com)

USA  
Tel: +1 616 897 9241 Email: [usasales@whalepumps.com](mailto:usasales@whalepumps.com)

[www.whalepumps.com](http://www.whalepumps.com)